

DISKRETER UMGANG MIT KRUMMEN SACHEN

Felix Günther

TU Berlin

FUSSBALL



Deutschland gegen Kasachstan am 26.3.13

ARCHITEKTUR



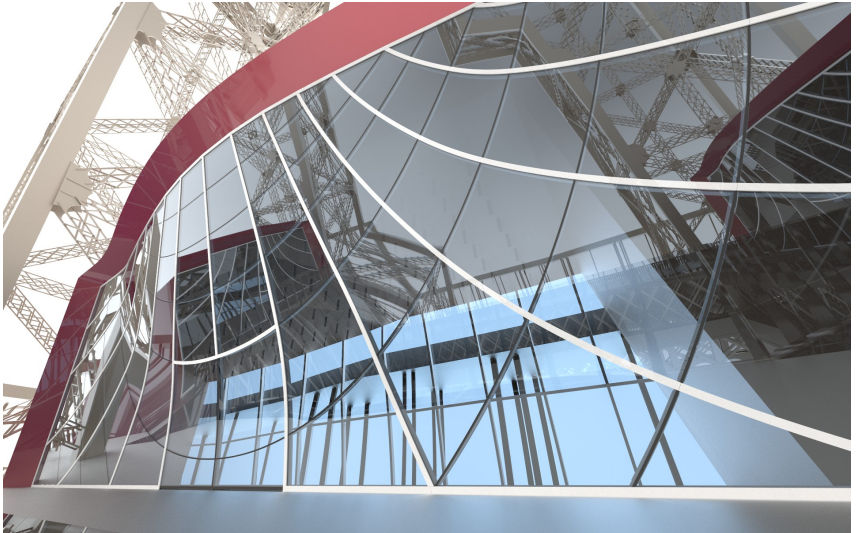
Münchener Olympiastadion

ARCHITEKTUR



Nilpferdhaus im Berliner Zoo

ARCHITEKTUR



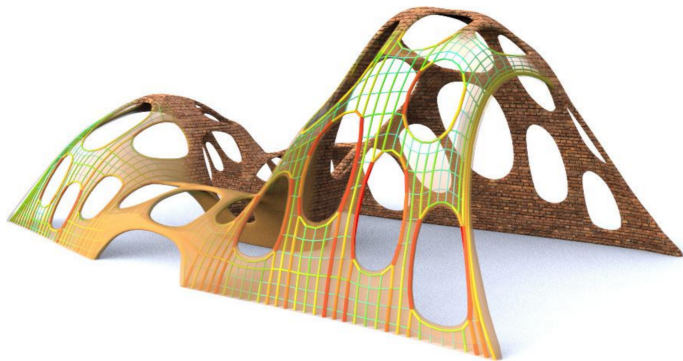
Eiffelturm

ARCHITEKTUR



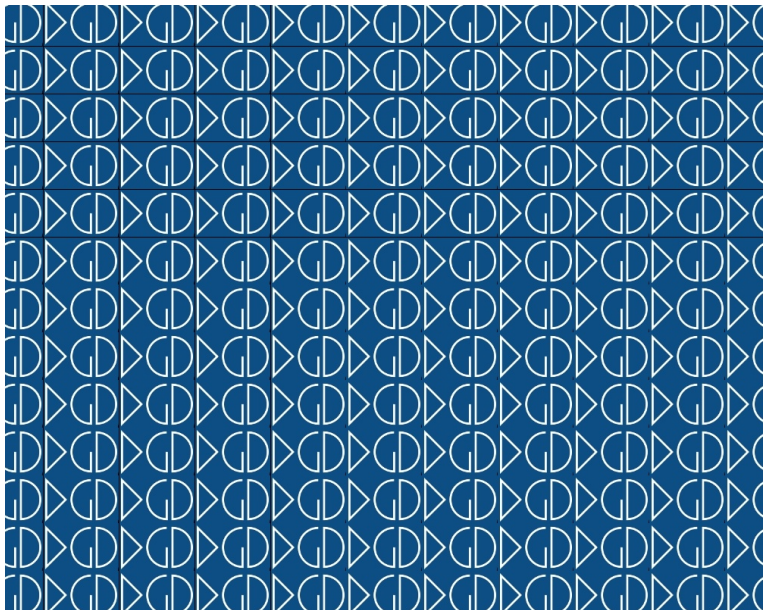
Problem-BER

ARCHITEKTUR

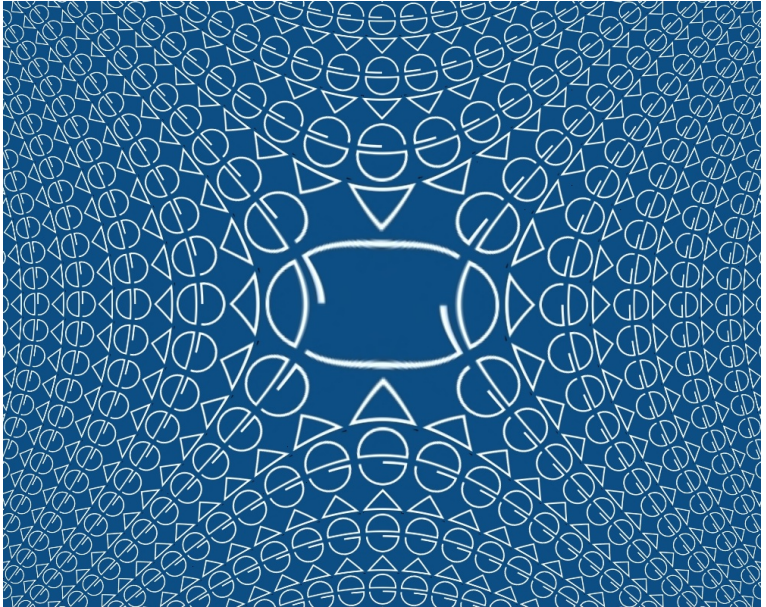


Selbsttragende Fläche

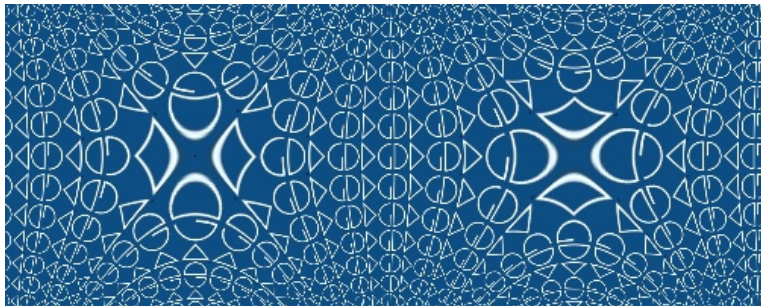
$$f(z) = z$$



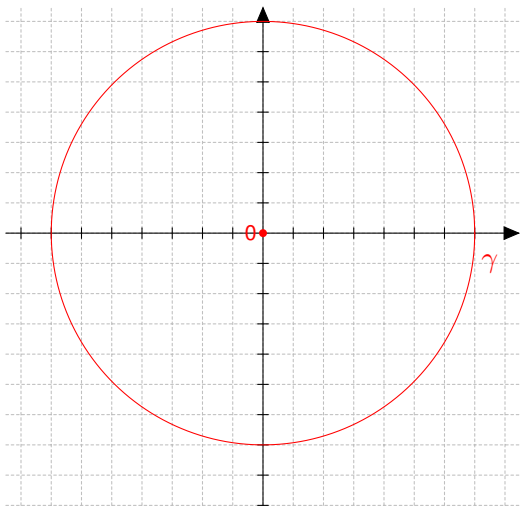
$$f(z) = z^2$$



$$f(z) = \sin(z)$$

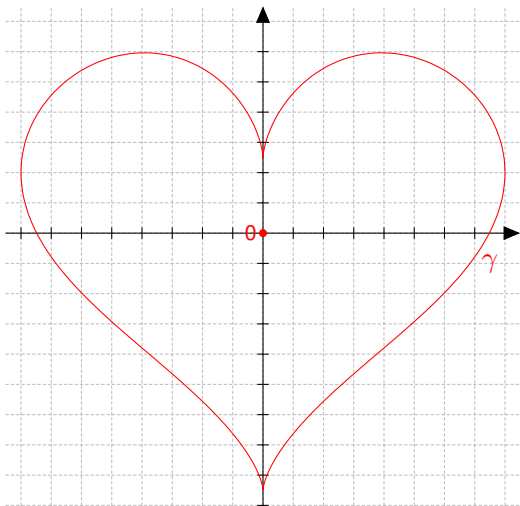


CAUCHY-FORMEL



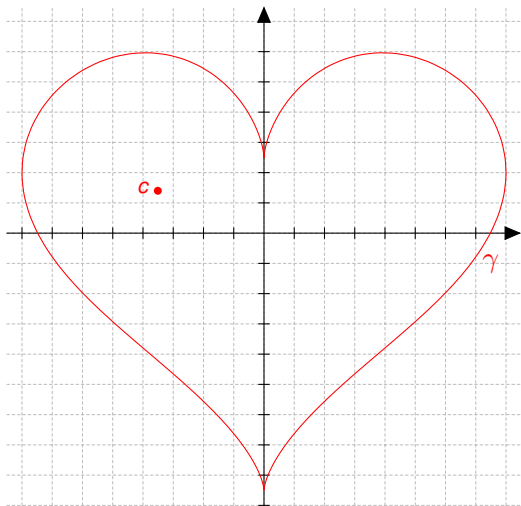
$$f(0) = \oint_{\gamma} \frac{f(z)}{z} dz$$

CAUCHY-FORMEL



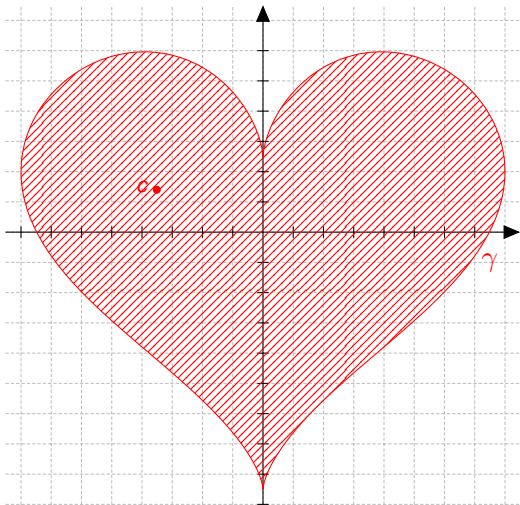
$$f(0) = \oint_{\gamma} \frac{f(z)}{z} dz$$

CAUCHY-FORMEL



$$f(c) = \oint_{\gamma} \frac{f(z)}{z - c} dz$$

CAUCHY-FORMEL



$$f(c) = \oint_{\gamma} \frac{f(z)}{z - c} dz$$

LIEBE UND MATHEMATIK

Voulez-vous Cauchy avec moi?

LIEBE UND MATHEMATIK



Voulez-vous Cauchy avec moi?

DISKRETE KOMPLEXE ANALYSIS

